



CrystalVox - Loqui2

CrystalVox Loqui2 gives you articulate and intelligible speech using the latest advancements in acoustic design. Surface mounted for large offices and meeting / board rooms.

Technical Specification

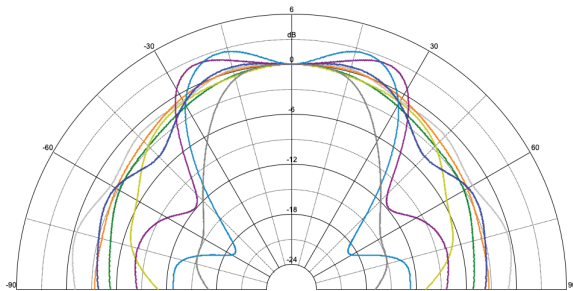
Type	5 way 4 drivers sound bar with built-in DSP amplifier
Frequency response (+/-5dB)	76Hz-17KHz
Transducers	2x 3" flat aluminium sandwich woofer, 2x 8x2" planar magnetic driver
Input sensitivity	1.22V(RMS)
SPL max at 1m	98dB
Horizontal dispersion @-6dB (200Hz-1.1KHz)*	92
Horizontal dispersion @-6dB (200Hz-1.1KHz)*	82
Vertical dispersion* @-6dB	90
Internal amplifier	4X30w Class D
Audio input terminal	Balanced 3 way Phoenix (supplied)
DC Input	24V/2A min. 2 way Phoenix (supplied)
Length	716mm
Width	120mm
Depth	80mm
Grille	Powder coated steel
Weight	4.2kg
Finish	Black/white/custom
Mounting	3xT-Slots(8mm). Flat, 30 and 45 degrees
Options	Wall bracket: Includes screws and locking nut

*Landscape orientation

Key Features

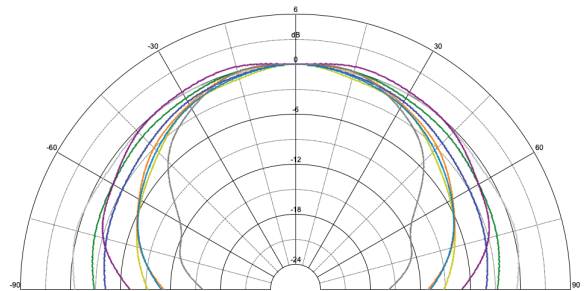
- Optimised planar/point source acoustic radiation for controlled audio coverage for rooms up to 25 people capacity
- High performance 8" proprietary planar magnetic driver combining sound dispersion control and low harmonic distortion
- 3" aluminium sandwich ultra rigid flat diaphragm woofer
- DSP 5 way crossover and FIR optimised frequency response
- Wide high frequency dispersion design to generate an even sound field
- Sealed and highly damped woofer enclosure
- Sharp transient response design for clear and intelligible vocals
- Rigid and mechanically damped 3mm aluminium extruded enclosure to reduce cabinet sound colorations
- Asymmetrical cabinet design to reduce internal standing waves
- 3x 8mm T-slots allow for easy multi-angle mounting

Polar Plots



Horizontal Dispersion*

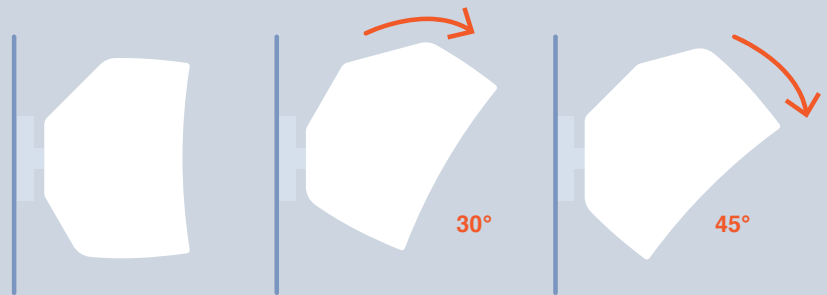
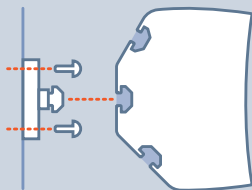
125 Hz
250 Hz
500 Hz
1000 Hz
2000 Hz
4000 Hz
8000 Hz
16000 Hz



Vertical Dispersion*

Surface-mount Options

Thanks to its 3 mounting rails, the Crystalvox speaker can be securely installed at different up or down tilting angles which is ideal for mounting above or below video screens.

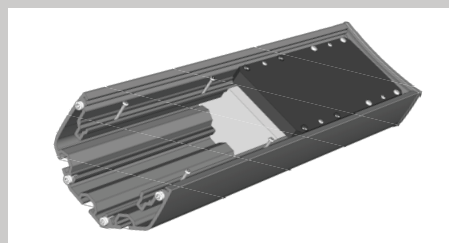


Design Features



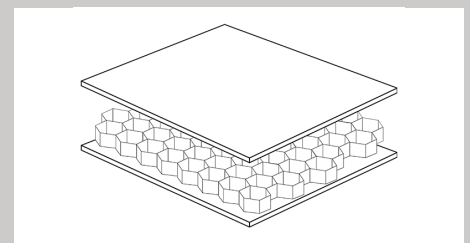
High performance planar magnetic driver

The internal components are engineered, manufactured and assembled with great care to achieve the most realistic listening experience.



3mm extruded aluminium enclosure

Even the speaker cabinets are mechanically and geometrically optimised to eliminate interfering vibration and resonances.



Honeycomb sandwich woofer

CrystalVox speakers use highly innovative and proprietary transducers like planar magnetic drivers and honeycomb sandwich diaphragm woofers. While requiring a great level of attention in the setup process, these high performances devices will deliver outstanding level of acoustic presence and realism.